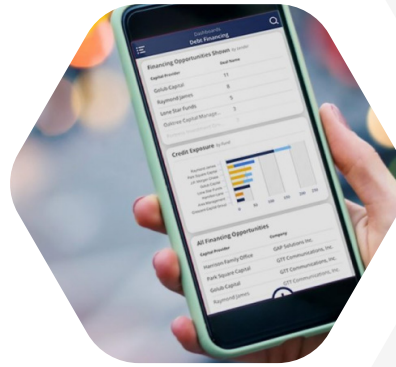


# Case Study



## The Company

Intapp, a leading provider of connected firm management solutions, sought to optimise its internal payroll processing to ensure compliance, reduce administrative overheads, and enhance employee satisfaction.

To achieve this, Intapp selected PayEscape, the UK-based payroll software provider known for its advanced cloud-based solutions and regulatory compliance features, to fulfil Intapp's UK payroll requirements.

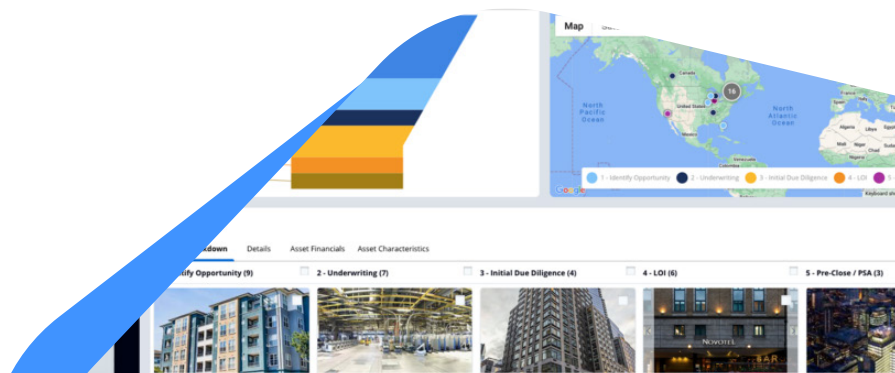
## The Challenge

Intapp faced several payroll management challenges, including:

- **Compliance complexity:** Navigating multi-jurisdictional payroll compliance and tax regulations.
- **Manual Errors:** Inefficiencies caused by manual data entry and fragmented systems.
- **Scalability Needs:** Supporting a growing workforce while maintaining high accuracy and promptness in payroll execution.

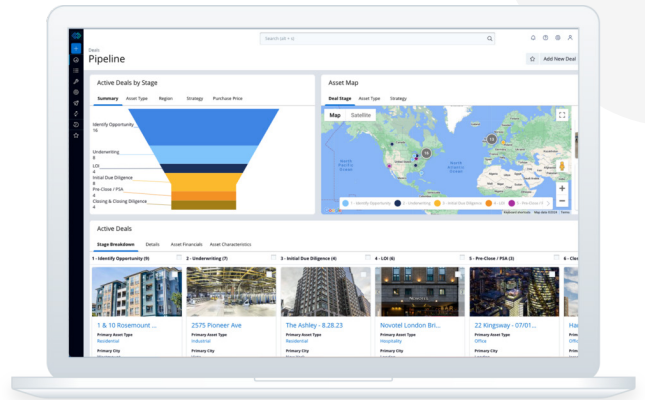
## PayEscape's Solution

PayEscape provided Intapp with a comprehensive solution that addressed these challenges.



## Key features included:

- ✓ **Cloud-Based Accessibility:** Intapp's payroll team could manage processes securely from anywhere.
- ✓ **Automated Tax Calculations and Filing:** The software streamlined compliance with HMRC regulations and minimized manual intervention.
- ✓ **Enhanced Reporting:** Real-time analytics enabled data-driven decision-making for payroll and financial planning.
- ✓ **Support:** UK based support team to provide expert advice and resilience.



“I truly enjoy working with the team at PayEscape. They’re consistently friendly, supportive, and easy to reach. Our main contact, Sarah, is fantastic!”

Ian Luther, Senior Global Payroll Specialist, [Intapp](#)



## Exceptional Service and Support

The standout feature of PayEscape’s offering was its unparalleled customer service and support.



### Dedicated Onboarding Support

PayEscape assigned a team of experts to guide Intapp through a seamless transition. This included secure data migration and personalised training to ensure a smooth adoption process



### Support

Intapp had access to a responsive customer support team with a "three-ring phone policy," ensuring immediate attention to queries



### Continuous Training and Updates

PayEscape provided regular updates on compliance and payroll best practices, enabling Intapp to stay ahead of regulatory changes.

# Conclusion

By selecting PayEscape as its payroll provider, Intapp benefited from exemplary service that ensured compliance, efficiency, and a strong collaborative relationship. This partnership exemplifies how outstanding support, and cutting-edge technology can revolutionise business operations.

